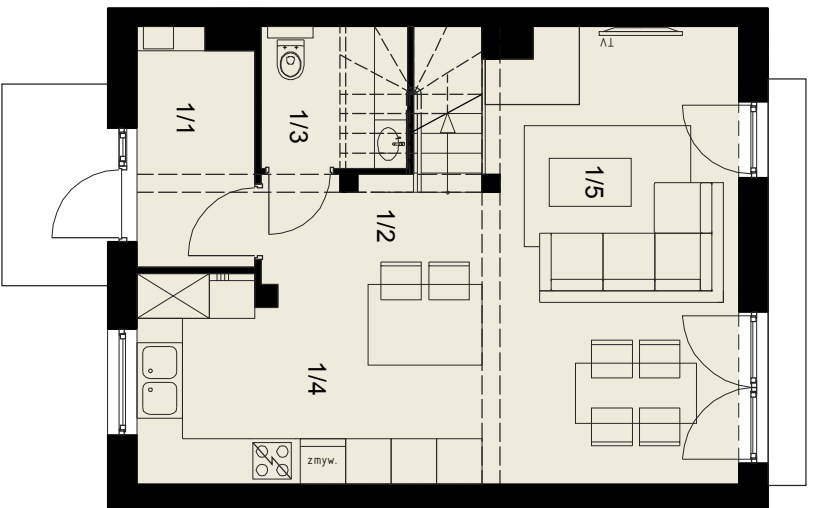
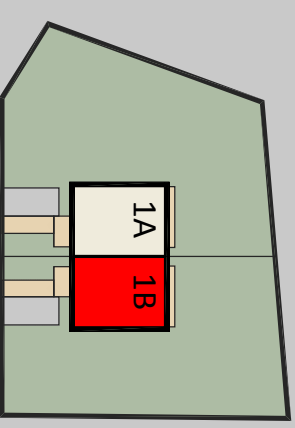


OSIEDLE IMBIROWE

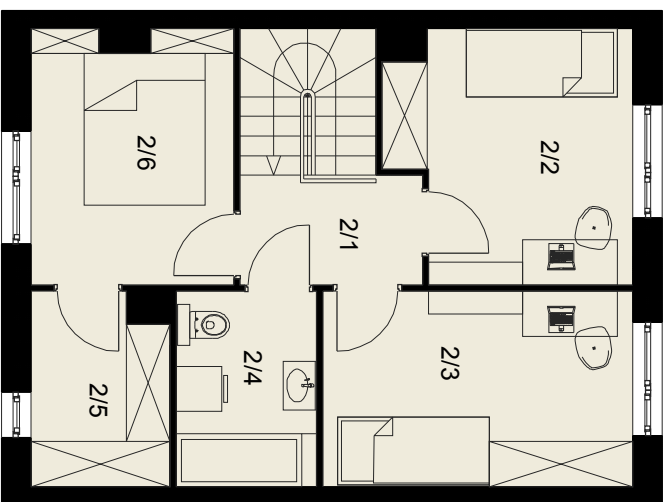
BUDYNEK: 1B

Pow. użytkowa: 88,55 m²
Pow. działki: ~349 m²



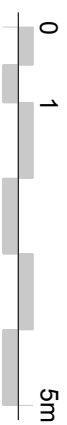
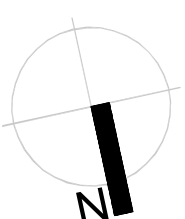
Parter

1/1 wiatrołap	4,62
1/2 komunikacja	7,58
1/3 WC	2,89
1/4 kuchnia	12,04
1/5 salon z jadalnią	20,01
Razem:	47,14

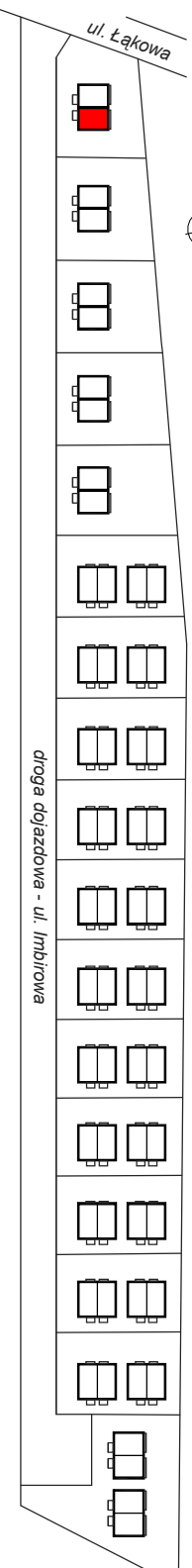


Poddasze

2/1 przedpokój	3,42
2/2 pokój	9,84
2/3 pokój	10,42
2/4 łazienka	4,68
2/5 garderoba	4,38
2/6 sypialnia	8,67
Razem:	41,41



Plan osiedla



ecoinwest

Ecoinwest Sp. z o. o.
tel. 516 055 322
biuro@domy-pruszcz.pl
www.domy-pruszcz.pl