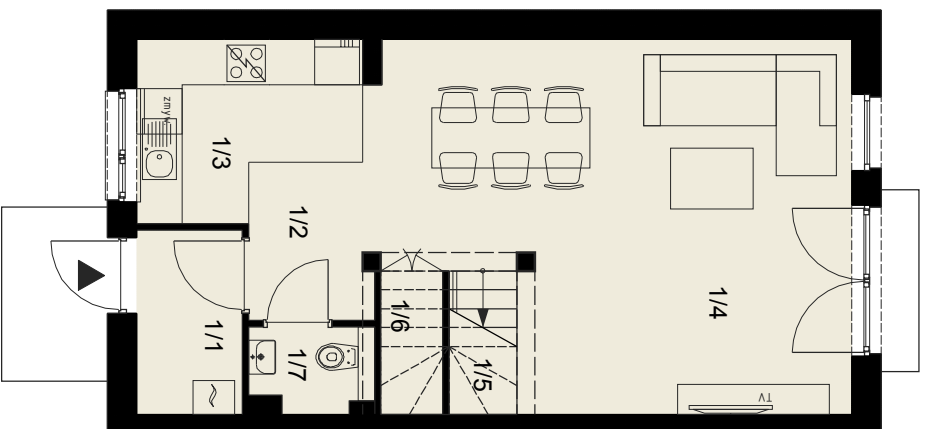
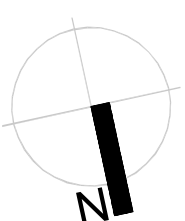
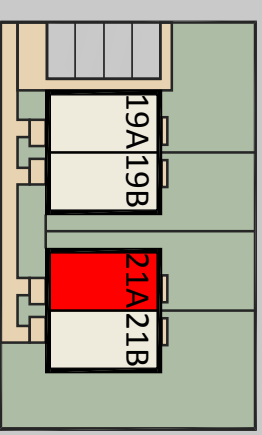


# OSIEDLE IMBIROWE

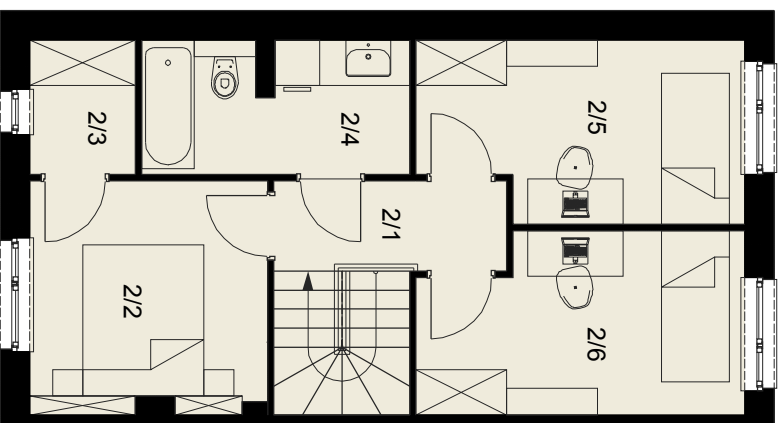
BUDYNEK: 21A

Pow. użytkowa: 87,15 m<sup>2</sup>  
Pow. działki: ~131 m<sup>2</sup>



### Parter

1/1 wiatrołap	3,30
1/2 hol	3,19
1/3 kuchnia	5,95
1/4 salon z jadalnią	27,63
1/5 schody	3,42
1/6 pow. pod schodami	1,49
1/7 WC	1,68
<b>Razem:</b>	<b>46,66</b>



### Poddasze

2/1 przedpokój	3,57
2/2 sypialnia	9,38
2/3 garderoba	2,40
2/4 łazienka	5,95
2/5 sypialnia	9,57
2/6 sypialnia	9,62
<b>Razem:</b>	<b>40,49</b>

