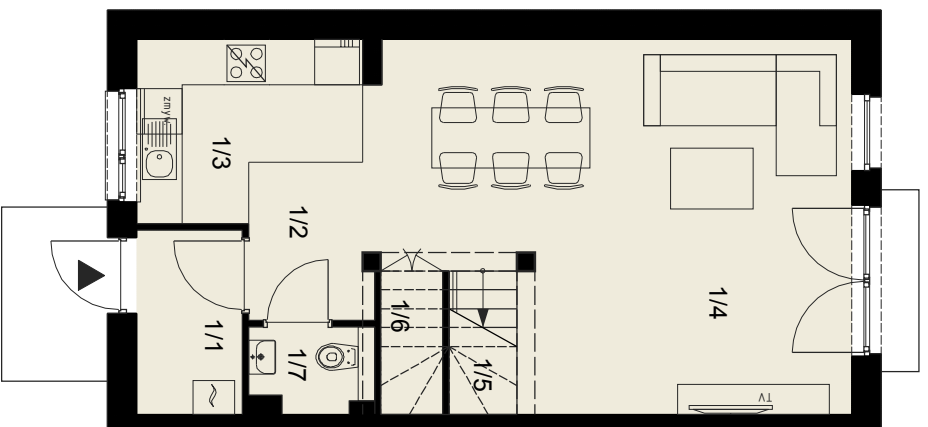
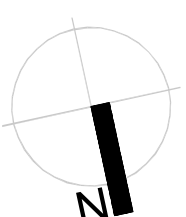
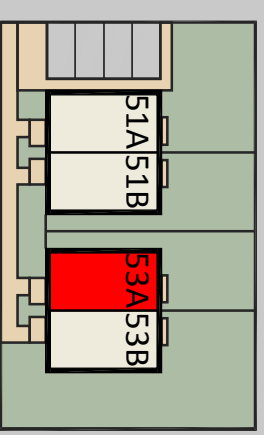


OSIEDLE IMBIROWE

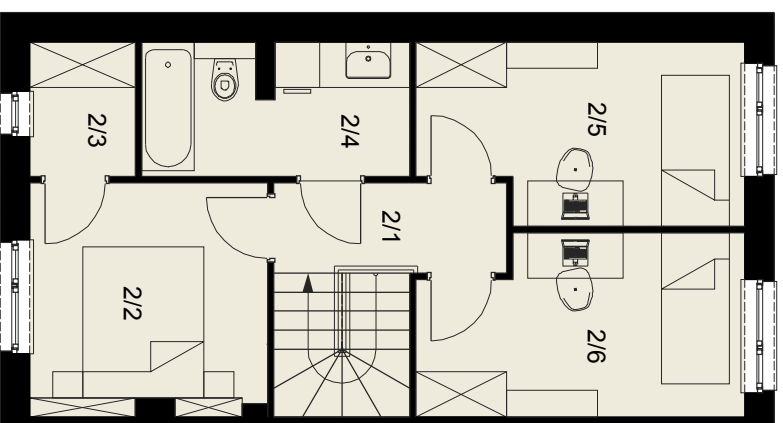
BUDYNEK: 53A

Pow. użytkowa: 87,15 m²
Pow. działki: ~134 m²



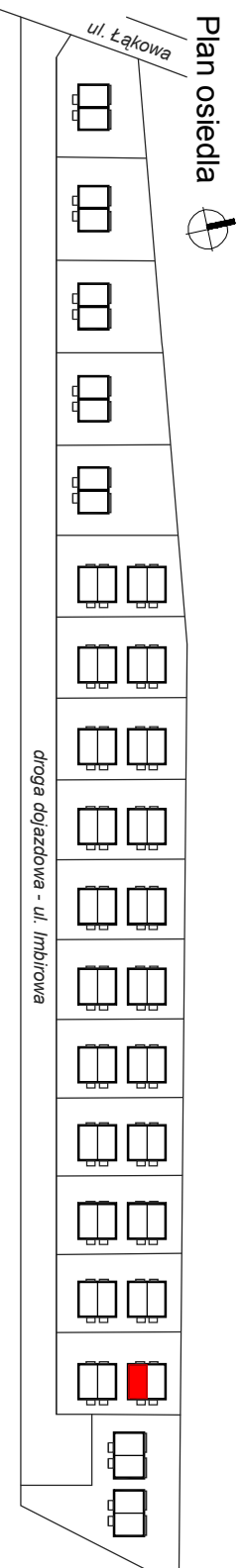
Parter

1/1 wiatrołap	3,30
1/2 hol	3,19
1/3 kuchnia	5,95
1/4 salon z jadalnią	27,63
1/5 schody	3,42
1/6 pow. pod schodami	1,49
1/7 WC	1,68
Razem:	46,66



Poddasze

2/1 przedpokój	3,57
2/2 sypialnia	9,38
2/3 garderoba	2,40
2/4 łazienka	5,95
2/5 sypialnia	9,57
2/6 sypialnia	9,62
Razem:	40,49



Plan osiedla



ecoinwest

Ecoinwest Sp. z o. o.
tel. 516 055 322
biuro@domy-pruszcz.pl
www.domy-pruszcz.pl