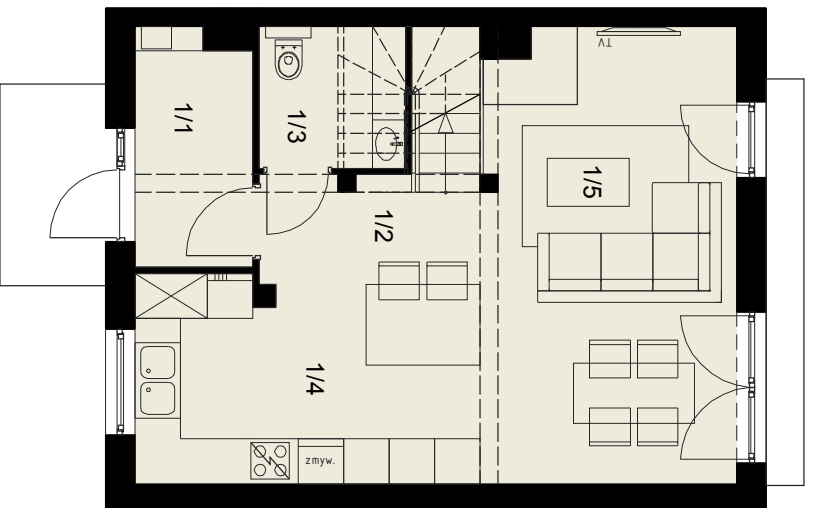
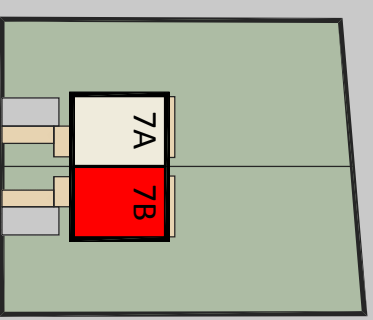


# OSIEDLE IMBIROWE

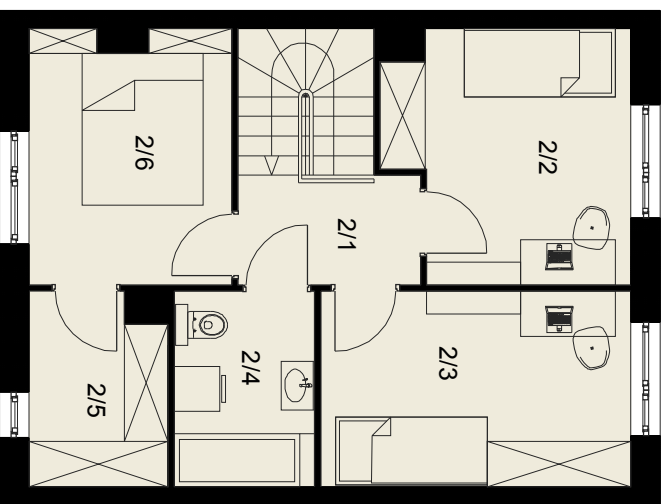
**BUDYNEK: 7B**

Pow. użytkowa: 88,55 m<sup>2</sup>  
Pow. działki: ~409m<sup>2</sup>



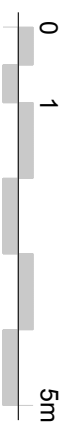
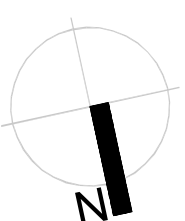
**Parter**

1/1 wiatrołap	4,62
1/2 komunikacja	7,58
1/3 WC	2,89
1/4 kuchnia	12,04
1/5 salon z jadalnią	20,01
<b>Razem:</b>	<b>47,14</b>

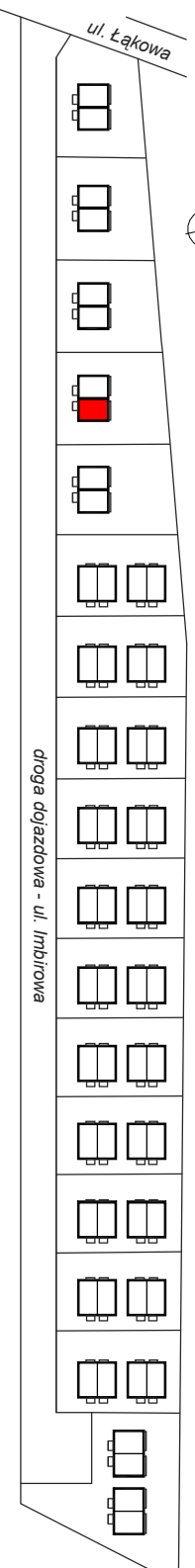


**Poddasze**

2/1 przedpokój	3,42
2/2 pokój	9,84
2/3 pokój	10,42
2/4 łazienka	4,68
2/5 garderoba	4,38
2/6 sypialnia	8,67
<b>Razem:</b>	<b>41,41</b>



Plan osiedla



**ecoinwest**

**Ecoinwest Sp. z o. o.**  
tel. 516 055 322  
biuro@domy-pruszcz.pl  
www.domy-pruszcz.pl